

My Air Buddy And I

Version: 1.07.00 Beta

Build: 67

Released Date: 9/10/2025

Language: English

Unit of Measure: Imperial

BLE Quick Start

(Bluetooth Low Energy)

Contents

Add a Dive Computer	3
Connect a Dive Computer	15
Download Computer Dives	20

Add a Dive Computer



Pick a Dive



LBN	Date/Time	Status	My Buddy
Location		Dive Site	



Tap Pick a dive computer at the bottom right

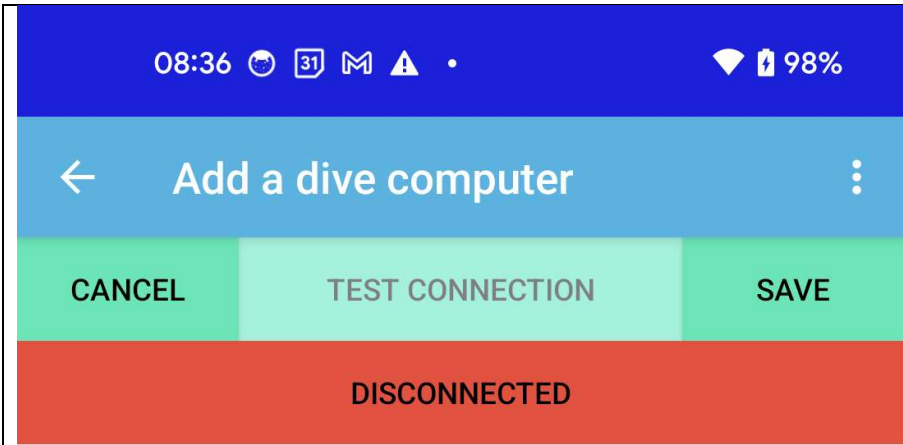
← Pick a dive computer ⋮

Computer No	Description
-------------	-------------



No dive computers are listed.

Tap Add a dive computer at the bottom right.



No dive computer details exist yet.

The status is DISCONNECTED and in Red.

Tap the Bluetooth icon at the bottom right.

Description (required)

Vendor

Model

Connection Type

Transport

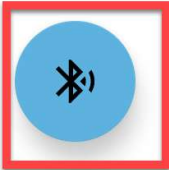
Device Name

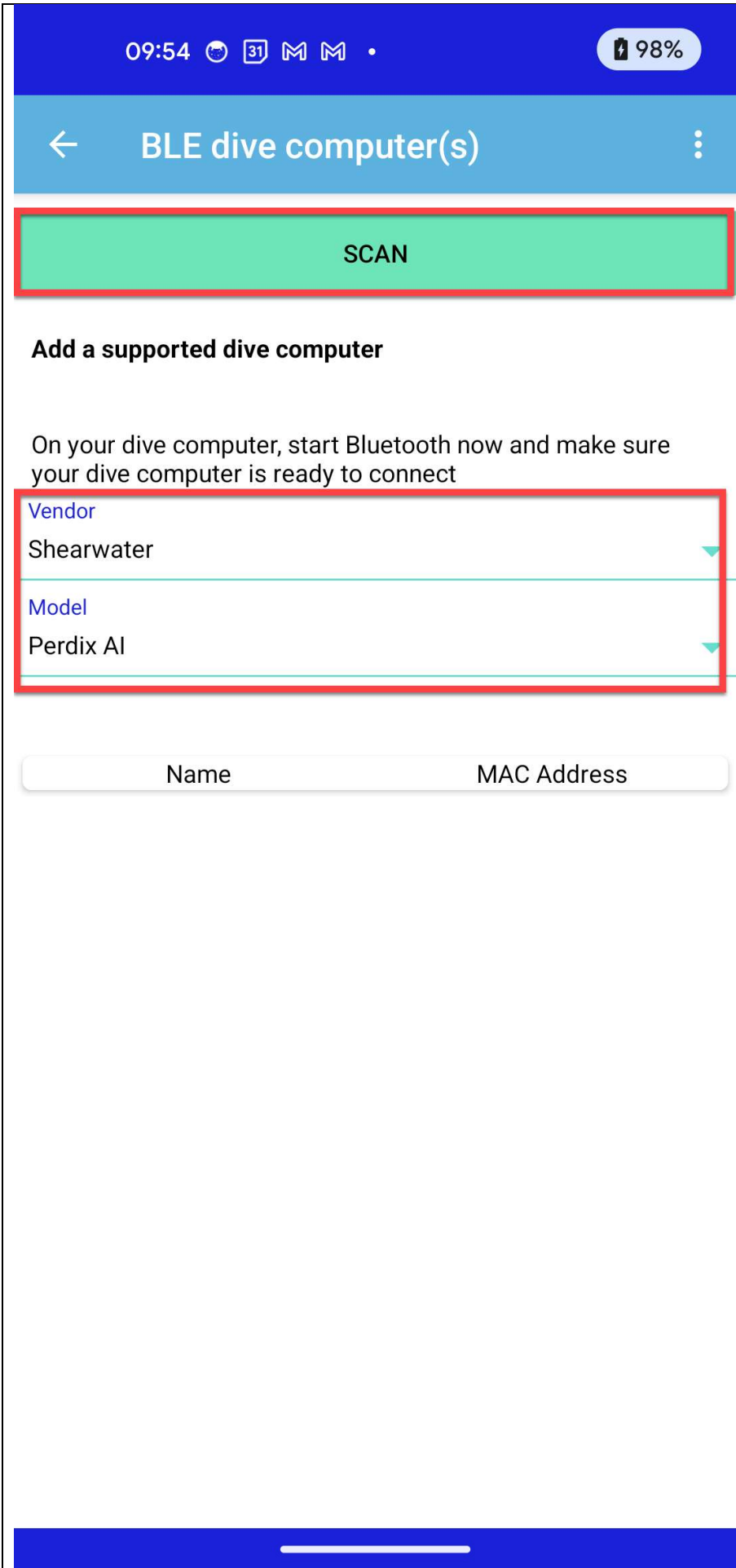
Firmware
0

MAC Address

Serial Number
0

Note





MABAI only supports BLE dive computers supported by libdivecomputer.

Select the Vendor of your dive computer.

Select the model of your dive computer.

MAKE SURE YOUR DIVE COMPUTER IS ON AND BLUETOOTH IS ON.

Tap SCAN.

08:36 [notification icons]

98%

← BLE dive computer(s)

SCAN

Add a supported dive computer

On
you
Ver
She
Mo
Per

Allow My Air Buddy And I to access this device's location?



Precise



Approximate

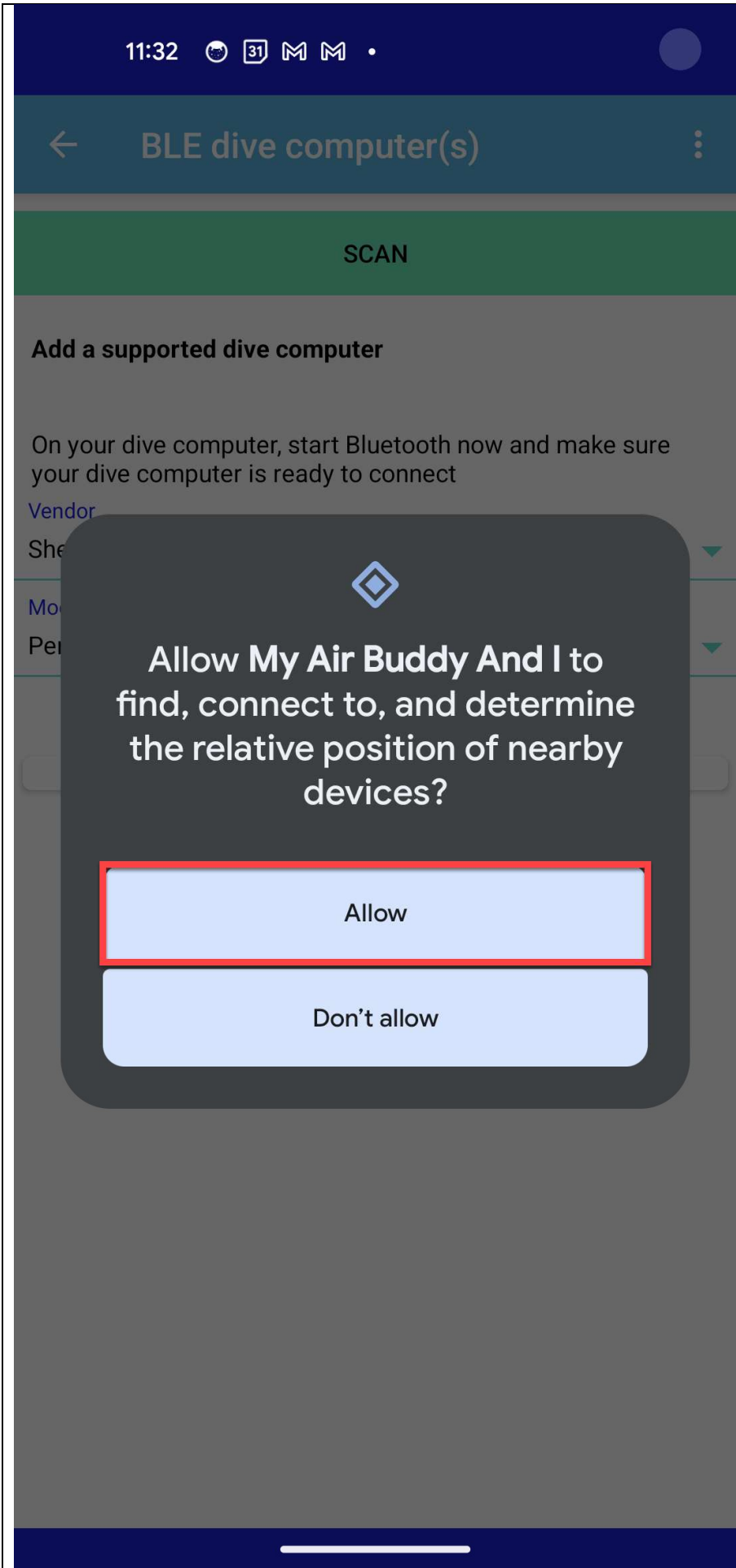
While using the app

Only this time

Don't allow

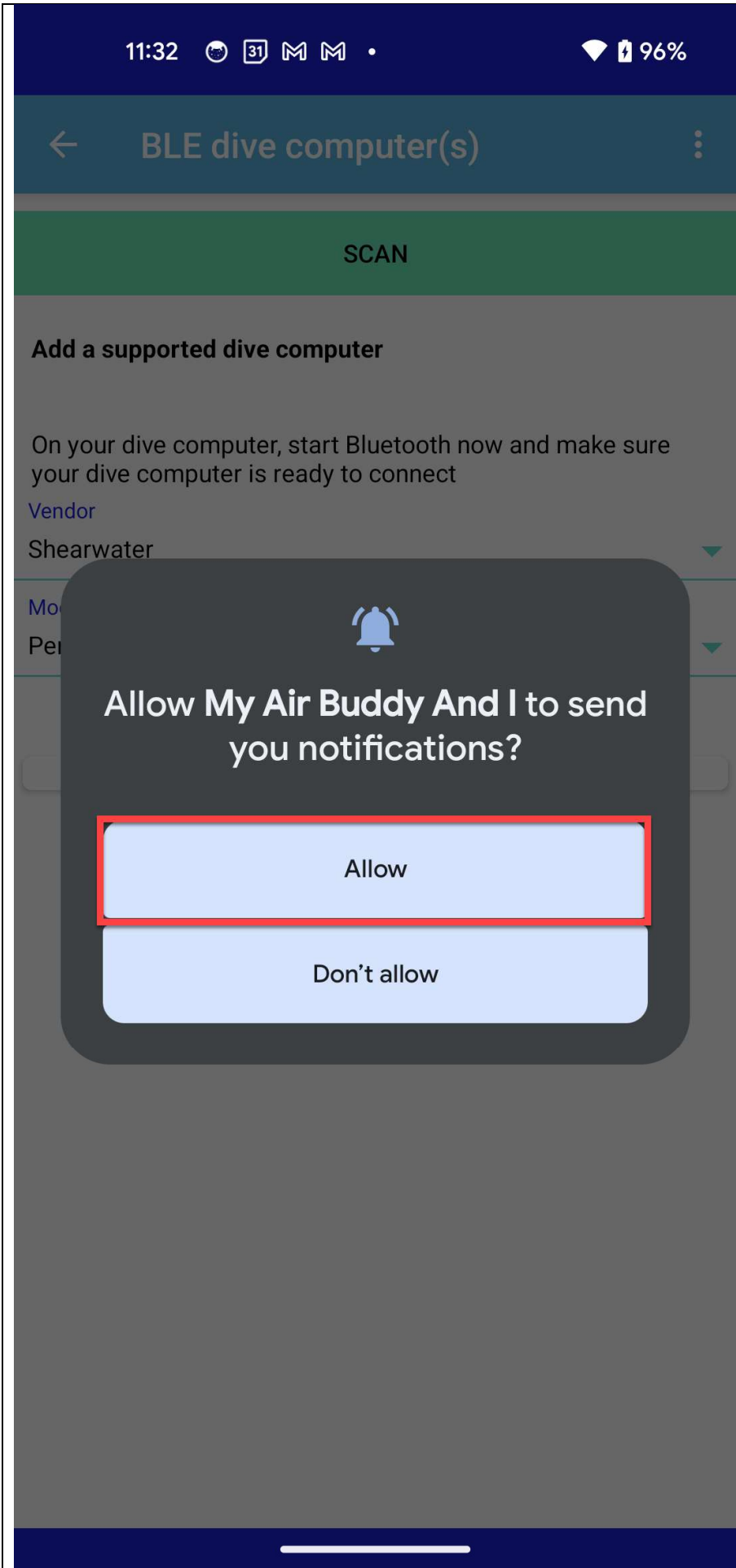
Allow the Access this device's location permission.

MABAI will not be able to work without that permission.



Allow the Find, connect to, and determine the relative position of nearby device permission.

MABAI will not be able to work without that permission.



Allow to send you notifications permission.

MABAI will not be able to work without that permission.

BLE dive computer(s)

SCANNING...

Add a supported dive computer

On your dive computer, start Bluetooth now and make sure your dive computer is ready to connect

Vendor

Shearwater

Model

Perdix AI

Name	MAC Address
ihoment_H6127_8F66	A4:C1:38:DA:8F:66
N06FC	FA:53:D1:7B:33:A1
N04TN	C9:F3:E9:3E:3D:35
ihoment_H6138_C8A9	A4:C1:38:98:C8:A9
Perdix	F1:4C:BE:12:8A:BD
[TV] Samsung Q6DAA 55 TV	80:47:86:87:E5:97
LE-High Note	4C:87:5D:60:56:D6
LG tv	4D:76:E7:C1:CA:CC
LE-reserved_I	4C:87:5D:60:67:BE
N07MP	E7:A3:2A:3E:60:E9

All the nearby Bluetooth devices are listed.

Make sure to select your dive computer.

← BLE dive computer(s) ⋮

SCAN

Add a supported dive computer


On your dive computer, start Bluetooth now and make sure your dive computer is ready to connect

Vendor

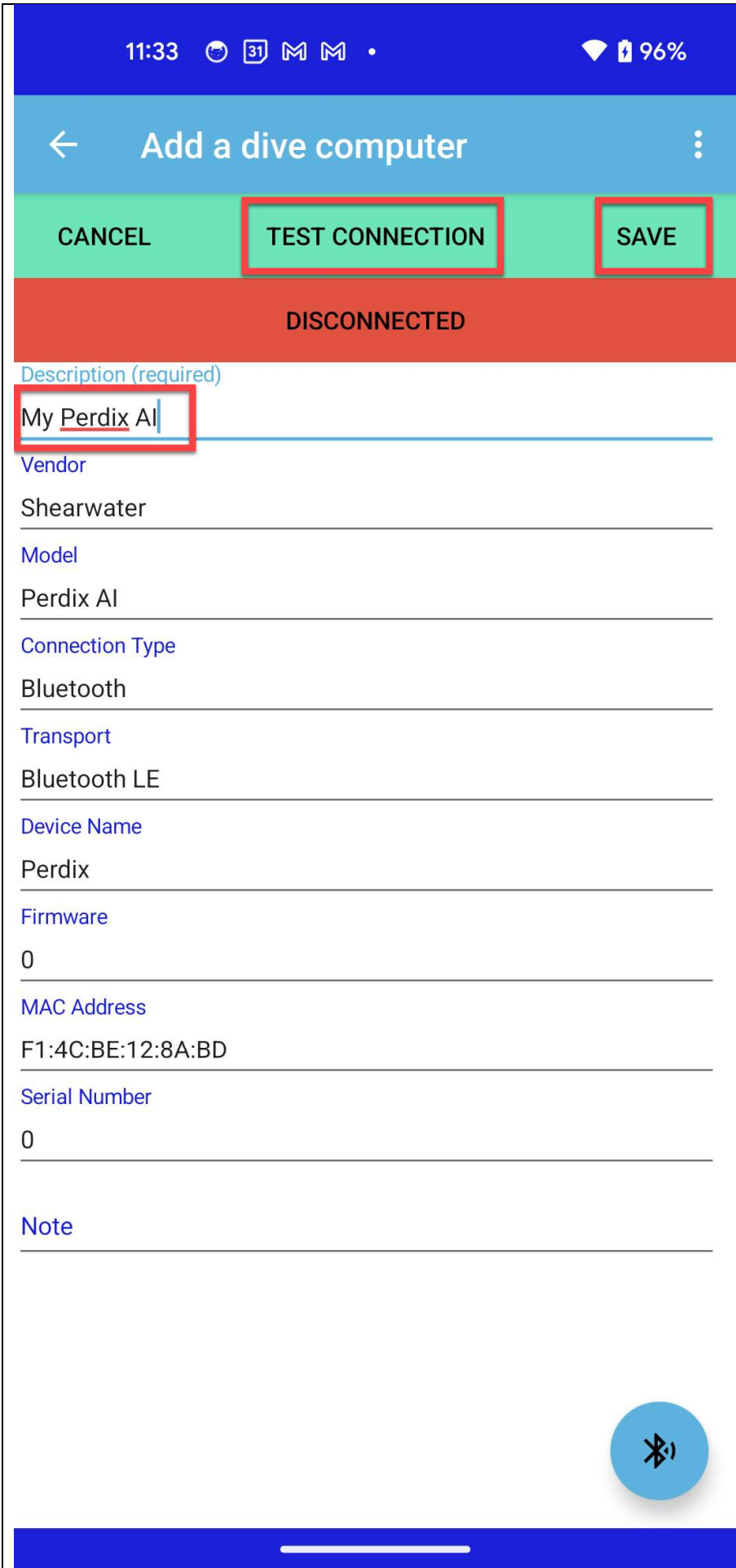
Shearwater

Model

Perdix AI

Name	MAC Address
Bose Color SoundLink	08:DF:1F:32:EC:9C
vivoactive HR	E8:4B:1D:2F:AA:0E
MICHELLATITUDE	98:59:7A:86:32:2D
LE-High Note	4C:87:5D:60:56:D6
GK001739	D4:FF:00:00:00:92
Perdix	F1:4C:BE:12:8A:BD
 Connect	
ihoment_H6127_8F66	A4:C1:38:DA:8F:66
LG tv	43:DE:8B:72:96:9D
N06FC	FA:53:D1:7B:33:A1
ihoment_H6138_C8A9	A4:C1:38:98:C8:A9
LE-reserved_I	4C:87:5D:60:67:BE
N07MP	E7:A3:2A:3E:60:E9

Tap Connect for your dive computer.



The status is DISCONNECTED and in Red.

Enter your description.

Tap SAVE.

You can the connection by tapping TEST CONNECTION. Make sure Bluetooth is enabled on your dive computer.

← Pick a dive computer

Computer No	Description
1	My Perdix AI



Detail

1 My Perdix AI



Dives



Your dive computer has been added.

Connect a Dive Computer



Pick a Dive



LBN	Date/Time	Status	My Buddy
Location		Dive Site	



Tap Pick a dive computer at the bottom right.

← Pick a dive computer

Computer No Description

1 My Perdix AI



Detail



Dives



Tap Dives to add computer dives.

09:06 [calendar icon] [mail icon] [mail icon] [dot icon]

[wifi icon] [battery icon] 98%

← My Perdix AI dive(s) [three dots icon]

Connect your dive computer

On your dive computer, start Bluetooth now and make sure your dive computer is ready to connect

DISCONNECTED

CONNECT

VIEW DIVE(S) ON THIS COMPUTER

DOWNLOAD DIVE(S)

The Status is DISCONNECTED and in Red.

MAKE SURE YOUR DIVE COMPUTER IS ON AND BLUETOOTH IS ON.

Tap CONNECT.

10:40 M M A M •

98%

← My Perdix AI dive(s) ⋮

Connect your dive computer

On your dive computer, start Bluetooth now and make sure your dive computer is ready to connect

CONNECTED

DISCONNECT

VIEW DIVE(S) ON THIS COMPUTER

DOWNLOAD DIVE(S)

The status is CONNECTED and in Green.

You can DISCONNECT.

You can view the dives in MABAI that were downloaded from that dive computer.

Download Computer Dives



My Air Buddy and I



Me	Dive Type	No Buddy
No Group 0.849	Average Equipment Group RMV	No Group 0.000
09:21:21	To Date	00:00:00
6/6/25 09:02 34 Day(s) 23:14	Last Dive Surface Interval	



Tap the top right menu



My Air Buddy

Waiver

Acknowledgements

Privacy Policy

Settings

Help

Contact Us

About

Me

Dive T

Avera

No Group

0.000

Equipmen

RM

00:00:00

To D

Last I

Surface I



Tap Settings

Scroll down and tap Starting Logbook No.

← Settings

Download and Import

Starting Logbook No.

Starting Logbook No when downloading dives from a dive computer or importing UDDF files

Scanning Timeout

Maximum time allowed in millisecond to scan and find Bluetooth Low Energy (BLE) devices. Default is 10000 ms

Connection Timeout

Maximum time allowed in millisecond to connect to a Bluetooth Low Energy (BLE) device. Default is 10000 ms

libdivecomputer Timeout

Maximum time allowed in millisecond to start the download from a dive computer. Default is 1000 ms

libdivecomputer Log Level

Information

Default Equipment Group

Assign default equipment group when downloading computer/importing dives



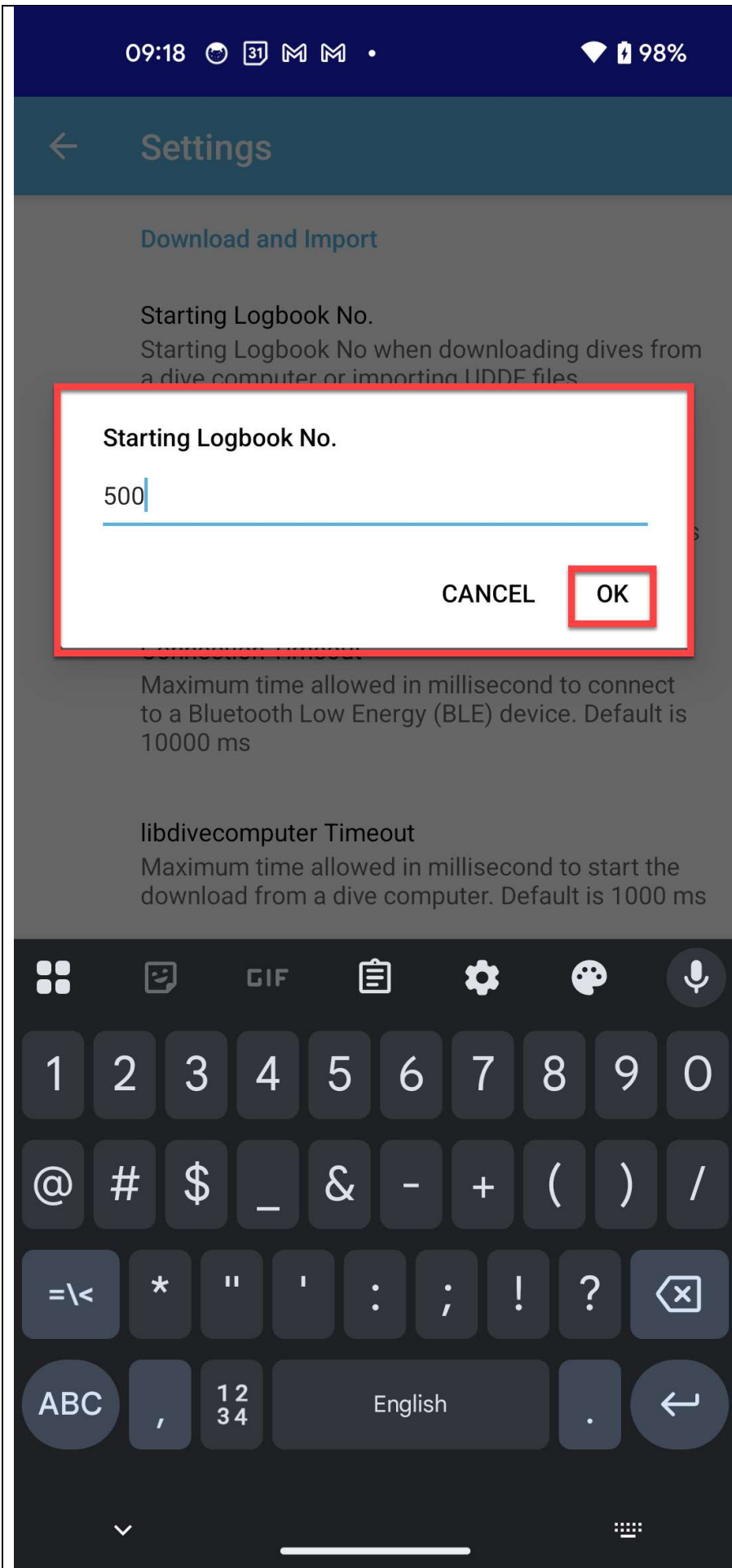
Force Matched Specs

Force a perfect match between the Downloaded/Imported cylinders and the Default Equipment Group



Error Margin on Match (%)

Error margin allowed when comparing Downloaded/Imported equipments against



Enter the Logbook No. you want the downloaded dives to start at.

You can change the Starting Logbook No. whenever there is a discrepancy between the NEXT Logbook No. on your dive computer and MABAI.

After the download process, MABAI have the functionalities to merge and to renumber dives.

Tap OK to continue.



DIR or don't do it!



Acronyms



Constants



Blending Tools (Beta)



Bluetooth Low Energy (Test)



Quick Calculators



Maintenance



Me



Divers



Equipment Groups



Equipment Group Switch



Cylinder Types



Dive Types



Dynamic Spinners



Group Types



Segment Types

No Buddy

No Group
0.000

00:00:00

Under the Maintenance menu, tap Equipment Groups



11:15



97%



Pick an Equipment Group



CANCEL

	Type	Description	Dives
	Double	AL80Dou/Pony	0
	Double	AL80Dou/Technical1	0
	Double	AL80Dou/Technical2	0
	Sidemount	AL80Sid/Pony	0
	Single	AL80Sin	0
	Detail		
	Single	AL80Sin/Pony	0



Pick the Equipment Group you want the Download process to try to match the download dives to that Equipment Group

← Edit an Equipment Group

CANCEL

SAVE

CLONE

Type (required)

Single

Description (required)

AL80Sin

New Description (conditional)

Default Group (required)

Yes

No	Usage	Type	Volume
----	-------	------	--------



1 Bottom Gas

AL80

78.2



Detail



Set the Equipment Group as the Default Group.

You can change this Default Group before every Download, as necessary.

19:33 🌐 📶 📧 •

📶 🔋 95%

← My Perdix AI dive(s) ⋮

Connect your dive computer

On your dive computer, start Bluetooth now and make sure your dive computer is ready to connect

DISCONNECTED

CONNECT

VIEW DIVE(S) ON THIS COMPUTER

DOWNLOAD DIVE(S)

The status is Disconnected and in Red.

MAKE SURE YOUR DIVE COMPUTER IS ON AND BLUETOOTH IS ON.

Click Connect to connect to the Dive Computer.

← My Perdix AI dive(s) ⋮

Connect your dive computer

On your dive computer, start Bluetooth now and make sure your dive computer is ready to connect

CONNECTED

DISCONNECT

VIEW DIVE(S) ON THIS COMPUTER

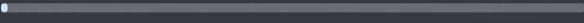
DOWNLOAD DIVE(S)

My Air Buddy And I

98%



Download Dive(s) · now



Cancel

CONNECTED

DISCONNECT

VIEW DIVE(S) ON THIS COMPUTER

DOWNLOAD DIVE(S)

The Downloading Dive(s) progress bar is shown in percentage as estimated by libdivecomputer



View computer dive(s) 10



SAVE DIVE(S)

Dive No. Date

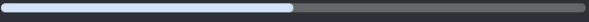
<input checked="" type="checkbox"/>	509	6/6/25
<input checked="" type="checkbox"/>	508	6/4/25
<input checked="" type="checkbox"/>	507	6/4/25
<input checked="" type="checkbox"/>	506	6/3/25
<input checked="" type="checkbox"/>	505	6/2/25
<input checked="" type="checkbox"/>	504	3/16/25
<input checked="" type="checkbox"/>	503	3/16/25
<input checked="" type="checkbox"/>	502	3/14/25
<input checked="" type="checkbox"/>	501	3/9/25
<input checked="" type="checkbox"/>	500	3/9/25

You can choose which dives to save in MABAI.

All dives are selected by default.

Tapping the Back Arrow or SAVE DIVE(S) will save the selected dives in MABAI.

Saving Dive(s) · now



On your dive computer, start Bluetooth now and make sure your dive computer is ready to connect

CONNECTED

DISCONNECT

VIEW DIVE(S) ON THIS COMPUTER

DOWNLOAD DIVE(S)

The Saving Dive(s) progress bar is shown in percentage as estimated by MABAI

09:30 [calendar icon] [mail icon] [mail icon] [mail icon]

[wifi icon] [battery icon] 98%

← My Perdix AI dive(s) ⋮

Connect your dive computer

On your dive computer, start Bluetooth now and make sure your dive computer is ready to connect

DISCONNECTED

CONNECT



My Perdix AI

10 dive(s) have been saved

OK

The number of dives saved is shown.

Tap OK to continue.

← My Perdix AI dive(s) ⋮

Connect your dive computer

On your dive computer, start Bluetooth now and make sure your dive computer is ready to connect

DISCONNECTED

CONNECT

VIEW DIVE(S) ON THIS COMPUTER

DOWNLOAD DIVE(S)

The status is Disconnected and in Red.

Ready to be connected again.

← Pick a Dive



N 507 6/4/25 08:37 Real No Buddy
 Location not specified Dive Site not specified

N 506 6/3/25 09:31 Real No Buddy
 Location not specified Dive Site not specified

N 505 6/2/25 09:45 Real No Buddy
 Location not specified Dive Site not specified

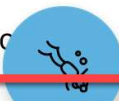
N 504 3/16/25 11:59 Real No Buddy
 Location not specified Dive Site not specified

N 503 3/16/25 09:59 Real No Buddy
 Location not specified Dive Site not specified

N 502 3/14/25 06:55 Real No Buddy
 Location not specified Dive Site not specified

N 501 3/9/25 11:19 Real No Buddy
 Location not specified Dive Site not specified

N 500 3/9/25 09:20 Real No Buddy
 Location not specified Dive Site not specified



The downloaded dives are shown on the dive list starting with the Logbook No specified earlier

End of document